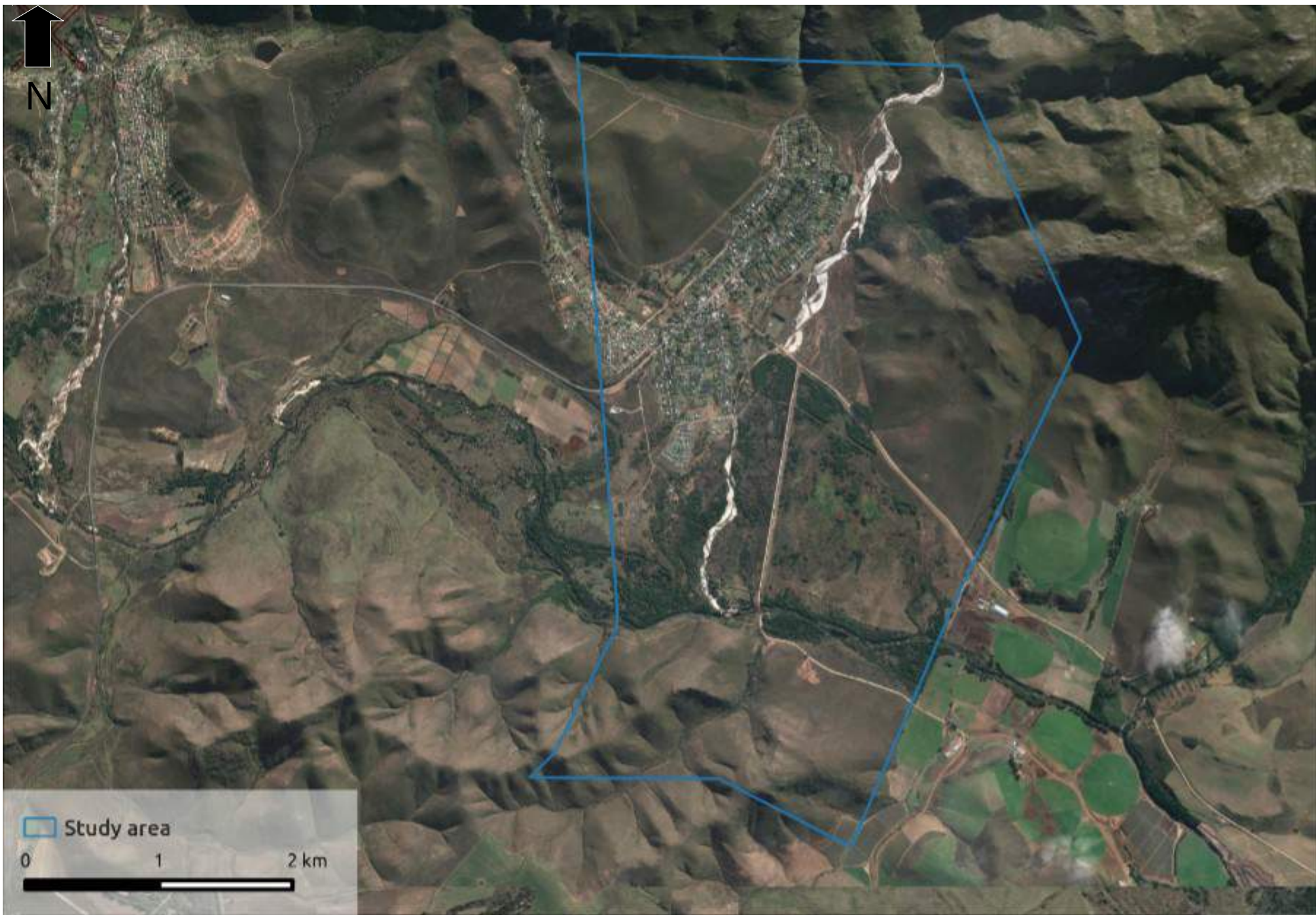


GREYTON HERITAGE INVENTORY SURVEY 2016





TERMS OF REFERENCE: SURVEY OF HERITAGE RESOURCES

The scope of work of this Heritage Survey as defined in the proposal requested by the Theewaterskloof Municipality is as follows:

1. Identification of a core heritage precinct within the Greyton village.
2. Identification of secondary heritage nodes/corridors within the Greyton village.
3. Identification of key heritage elements within the Greyton village that include, but not limited to the following:
 - 3.1 Aesthetics
 - 3.2 Architectural character
 - 3.3 Built form
 - 3.4 Cultural elements
 - 3.5 Planted landscape features
 - 3.6 Natural features of cultural value
 - 3.7 Public open spaces (commonage area)
 - 3.8 Leiwaterriculation system
 - 3.9 Identification and grading of key heritage buildings

The aim of the Heritage Survey is ultimately to inform the finalisation of the Greyton heritage overlay zones which is in the process of being developed by the

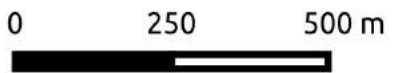
Heritage Overlay Advisory Committee (HOZAC) in collaboration with the planning department of the Theewaterskloof Municipality.

- METHODOLOGY
 - Desktop
 - Field assessment (assessment of significance)
 - Stakeholder consultation
 - Data capture (digital inventory)
- LIMITATIONS
- NATIONAL HERITAGE RESOURCES ACT (ACT 25 OF 1999)
 - Grading
- RESULTS:



Greyton Heritage Buildings on 1938 Aerial Image

▲ 1938 Buildings

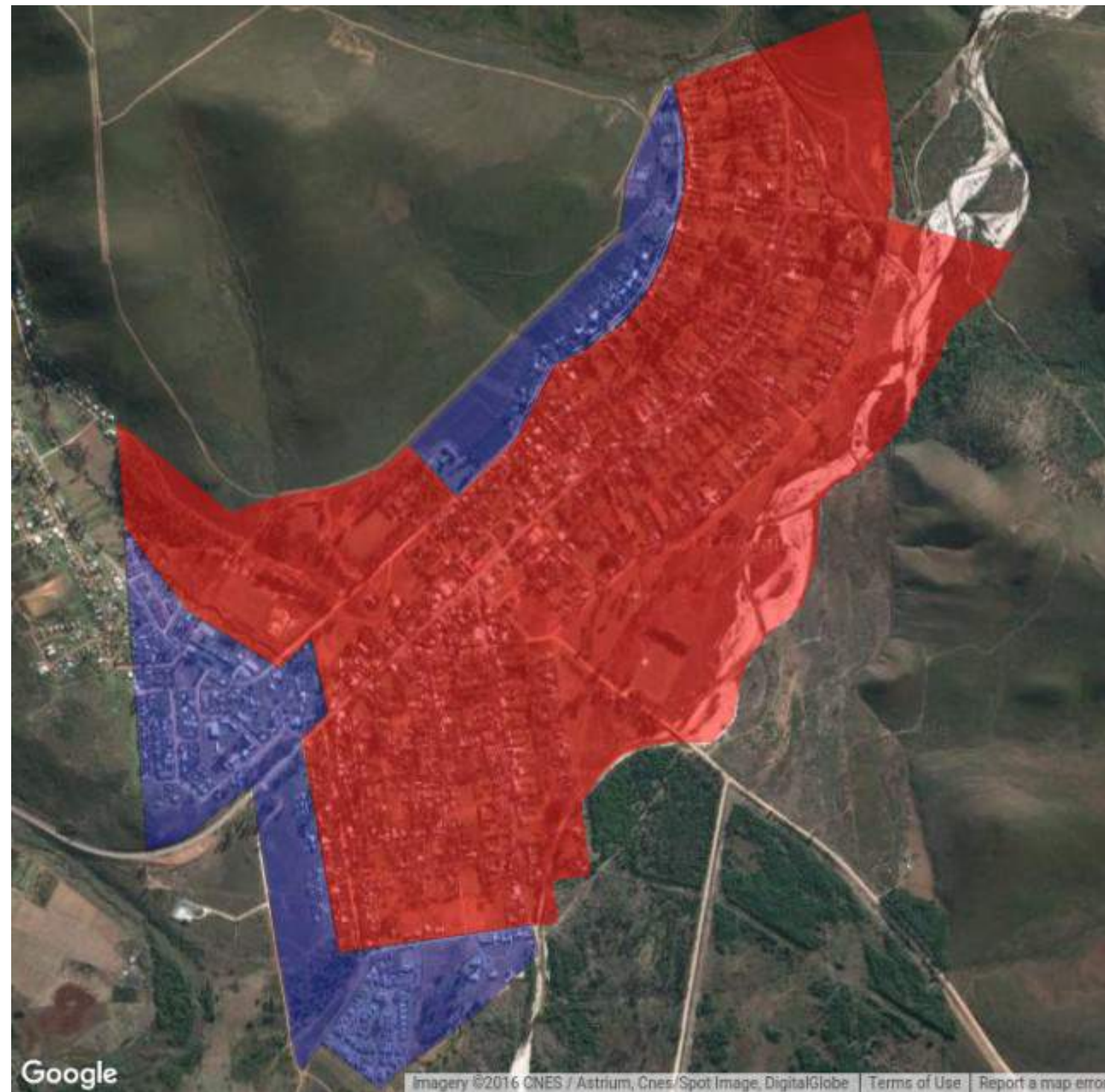




Greyton Heritage Buildings on 1961 Aerial Image

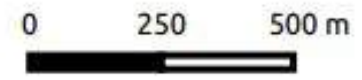
▲ 1961 Buildings

0 250 500 m



Greyton Heritage Protection Overlay Zone





- Proposed Core Heritage Precinct
- Proposed Secondary Heritage Precinct



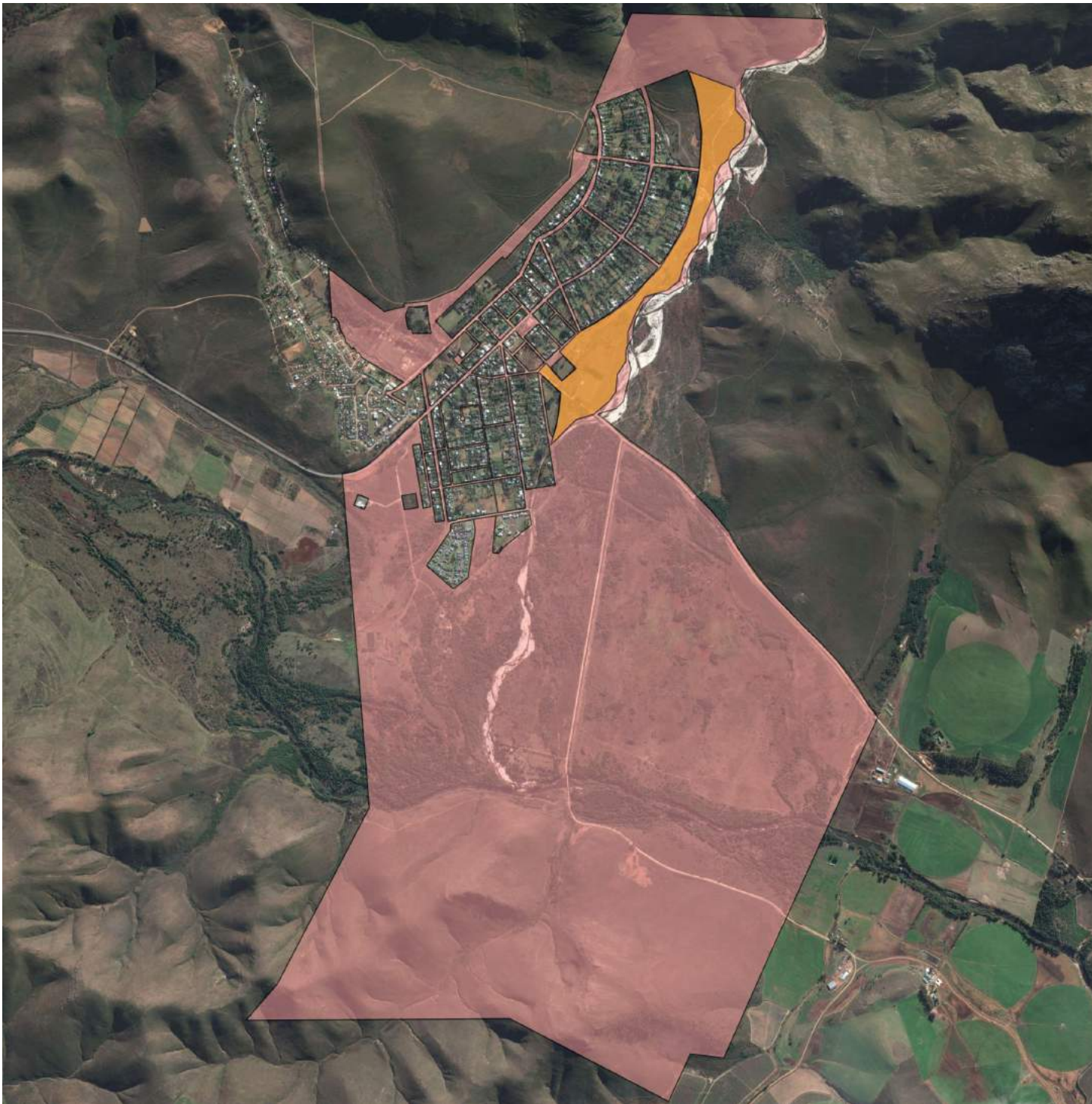
Google



Greyton Heritage Protection Overlay Zone

-  Proposed Heritage Area
-  Intensive improvement area
-  Important nodes
-  Spatial thresholds

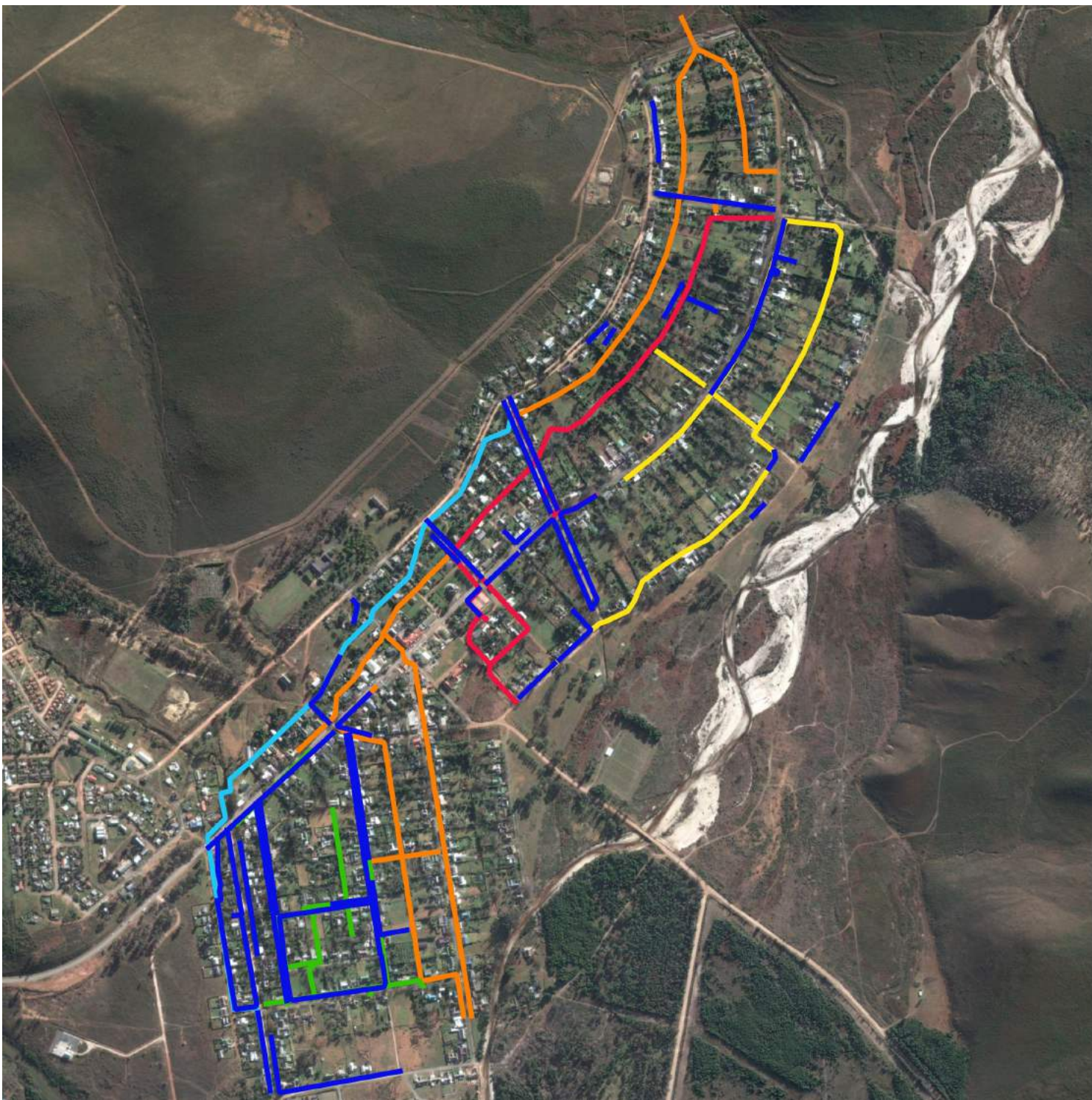




Greyton Heritage Survey

-  Commonage
-  Open Space





Greyton Leiwater System



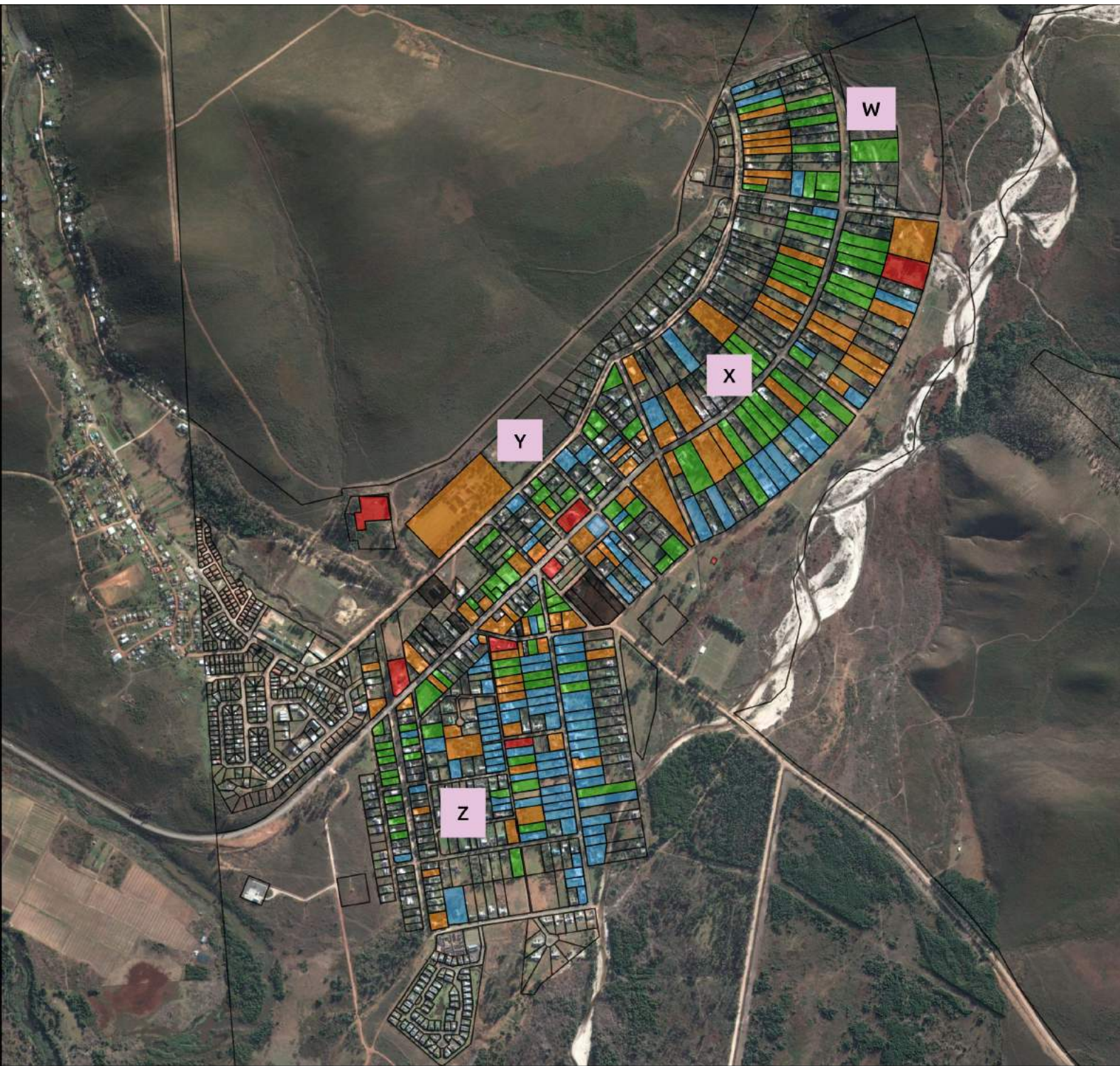


Heritage Resources

Graded Buildings

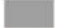


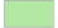


- Grade 2
- Grade 3A
- Grade 3B
- Grade 3C
- NCW
- Not graded

0 250 500 m



Study Area

Greyton erven

-  Grade 2
-  Grade 3A
-  Grade 3B
-  Grade 3C
-  Not Conservation-Worthy
-  Not Graded





Greyton Vacant Erven

 Grade 3C





Greyton Streetscape

Grade 3C



STATISTICS

- Total potential heritage resources during surveys = **442***
- Total buildings assessed
 - **289**
 - **184 heritage-worthy, 105 NCW**
- Total graded vacant erven (IIC)
 - **153**
 - **Total heritage resources 337**

*Additional +/- 90 buildings maybe > 60 years also being assessed in final dataset for this survey